

Description

The Combination Airbrick has been designed to provide high levels of ventilation through walls and into under floor voids.

The airbrick incorporates a front mounted grill which consists of evenly spaced openings specifically sized to prohibit large insects gaining access but wide enough not to be blocked by debris, paint or water droplets.

A mortar key around the fabric of the airbrick ensures secure adhesion to the building fabric. While a clip together facility provides a choice of ventilation sizes.

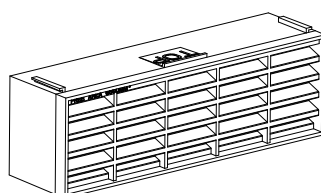
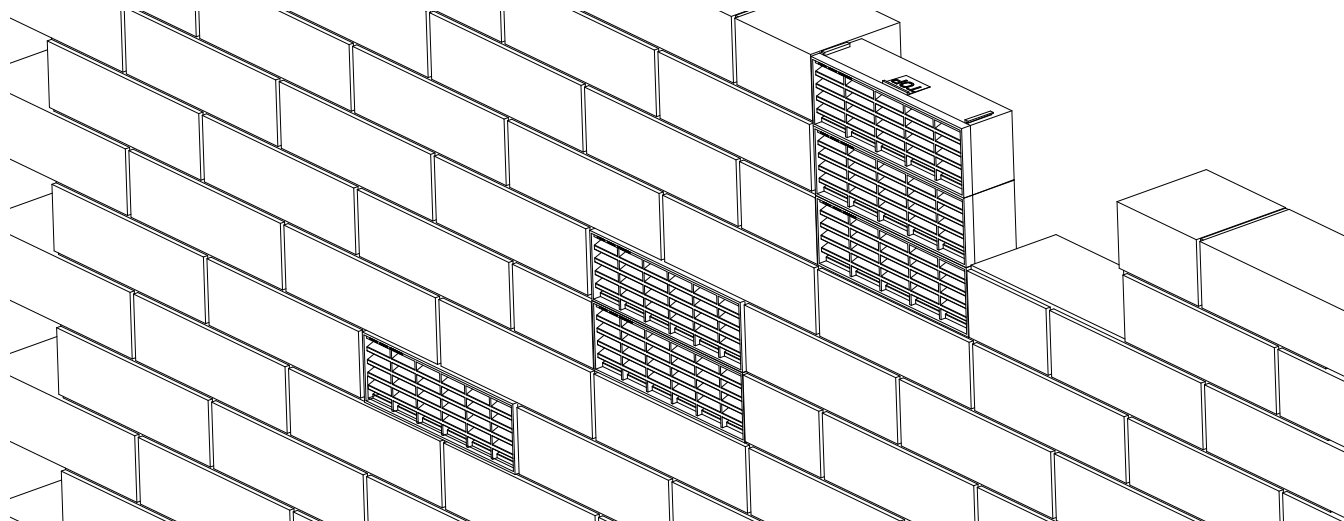
Product Code	RED (REDG930)
	BUFF (BUFFG930)
Part Weight	0.12 kg
Material	Polypropylene
Manufacturing Process	Injection Moulded
Free Area	6,450mm²

Dunbrik (Yorks) Ltd
172 Ferry Lane,
Stanley,
Wakefield,
WF3 4LT

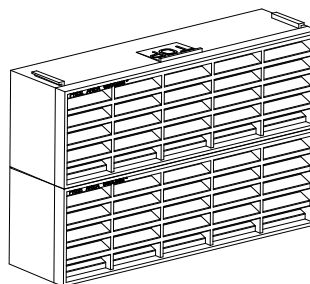
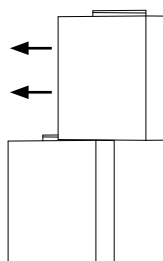
Tel: 01924 373694
Fax: 01924 383459
Email: orders@dunbrik.co.uk
Web: www.dunbrikflues.co.uk

The company maintains a policy of continuous development of its product range and reserves the right to amend the specification without notice.

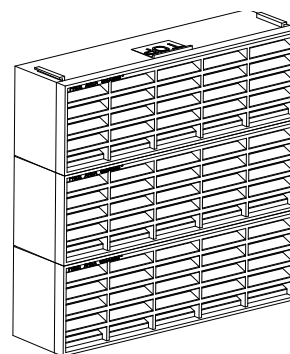
Issued Nov 2019



9"x3" = 6,450mm²



9"x6" = 12,900mm²



9"x9" = 19,350mm²

Fitting Instructions

The Combination Airbrick should be built into the brick course as per normal practice although care should be taken to keep the airflow passage clear from mortar droppings.

The combination Airbrick is to be used in conjunction with CSG935 to provide a complete through wall ventilation system. If the cavity has been bridged a suitable cavity tray should be fitted over the airbrick if above the D.P.C.

References

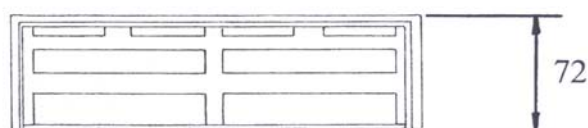
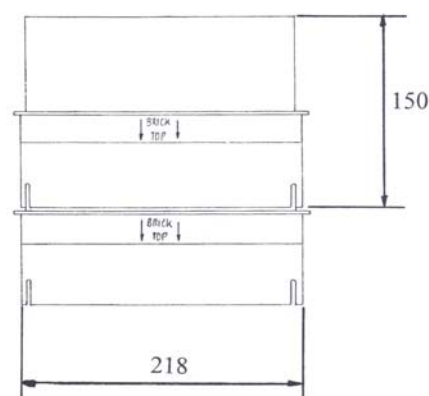
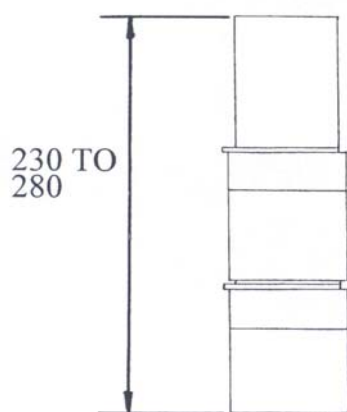
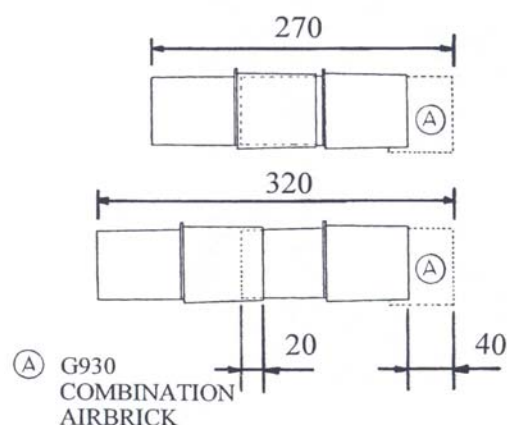
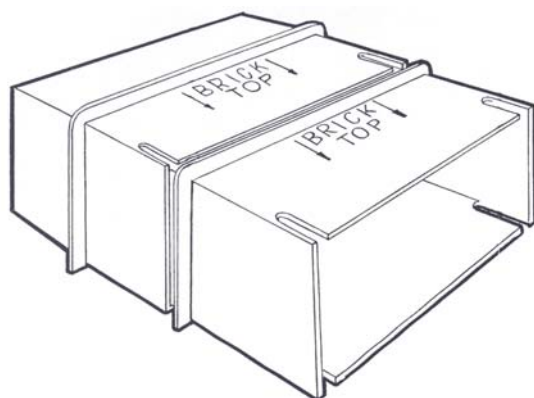
BRE: DIGEST 17/262
BRE: Floors, Flooring
DOE: Building Regs
C4NHBC: Standards 5.2

Dunbrik (Yorks) Ltd
172 Ferry Lane,
Stanley,
Wakefield,
WF3 4LT

Tel: 01924 373694
Fax: 01924 383459
Email: orders@dunbrik.co.uk
Web: www.dunbrikflues.co.uk

The company maintains a policy of continuous development of its product range and reserves the right to amend the specification without notice.

Issued Nov 2019

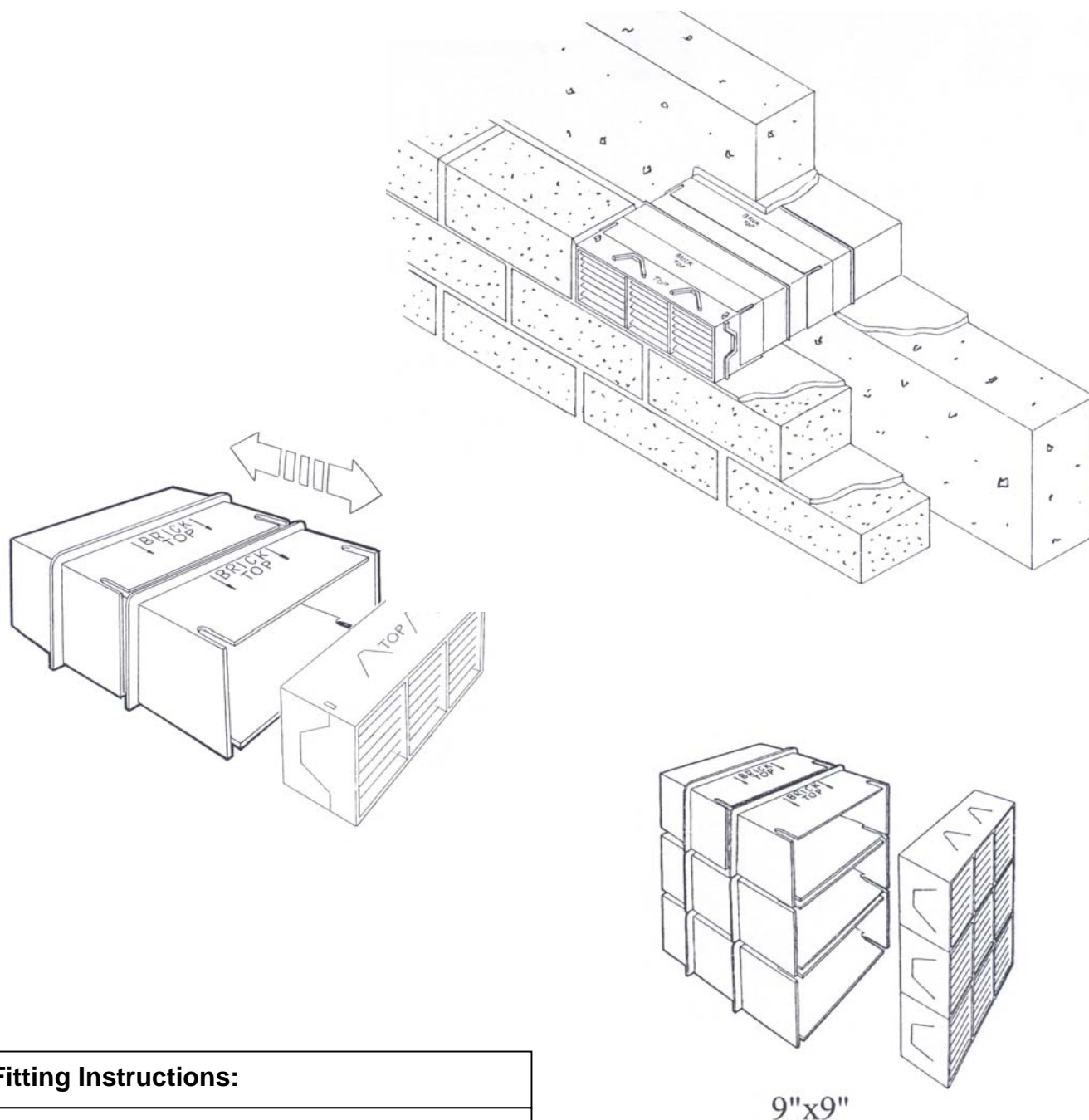


Description:

The CSG935 Combination Cavity Sleeve is designed to fit to the back of a RED/BUFFG930 Combination Airbrick 9" x 3". Alternatively it can be stacked to form 9" x 6" or 9" x 9" formations.

A telescopic ability enables the CSG935 to adjust to fit cavity widths of 50mm to 100mm. Further horizontal extension is possible with the addition of extra units.

Product Code	CSG935
Weight	0.17kg
Material	High Impact Styrene
Colour	Black
Manufacturing Process	Injection Moulded
Free Airflow	6,600mm²



Fitting Instructions:

The CSG935 Combination Cavity Sleeve should be fitted to the back of a CSG930 Combination Airbrick 9" x 3" and adjusted to fit the desired cavity width. It can be used in any combination required and built into the brick course as normal although care should be taken to keep the airflow passage clear from mortar droppings.

This product should be used in conjunction with RED/BUFFG930 to provide a complete through wall ventilation system.

References:

BRE:	DIGEST 17/262
BRE:	Floors, Flooring
DOE:	Building Regs C4
NHBC:	Standards 5.2